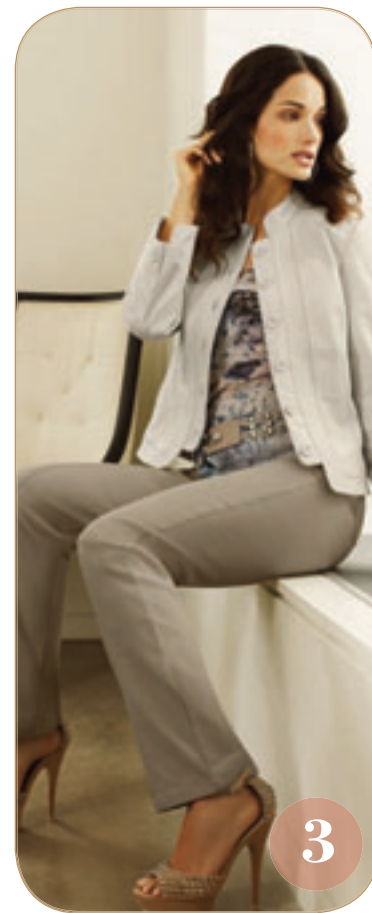
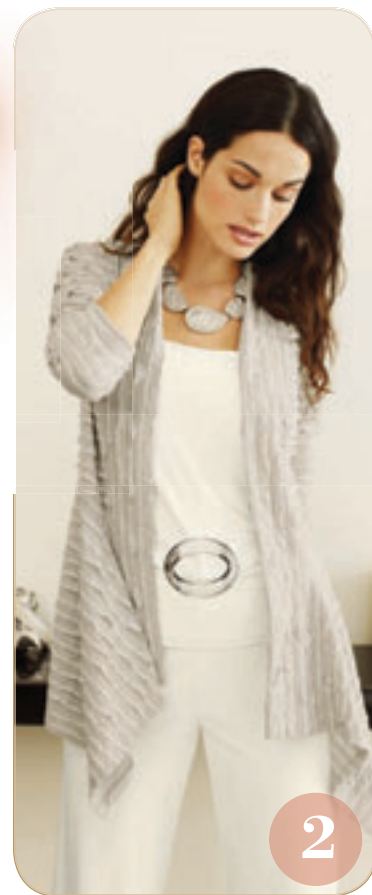


MELANIE LYNE

Spring 2012



Showcase your style savvy with a spring wardrobe brimming with a variety of contrasting looks from structured skirt and pant suits to versatile separates and sleek shift and sheath dresses. Monochrome suiting options in black, grey and white deliver a polished, professional edge while knit cardigans, tops and tunics in lace, hammered satins and soft, flattering fabrics complete the feminine, elegant mood. Strike a balance with a neutral palette including mocha, grey, ivory and black complemented by cheerful accent colours from deep coral to fresh white and a selection of floral, classic animal and abstract paint brush prints.

